



Sanwa Kenma, Ltd.

Tools for Artificial Stone

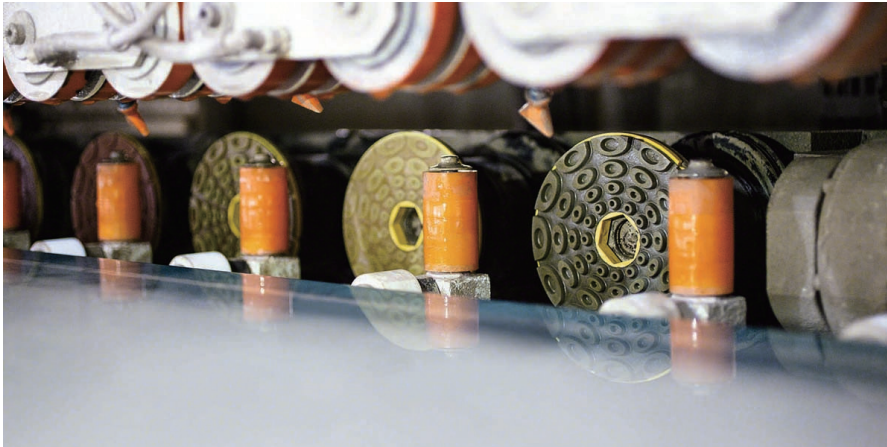


極楽蜻蛉 / PIXTA

<http://www.sanwakenma.co.jp/>

Tools for Artificial Stone

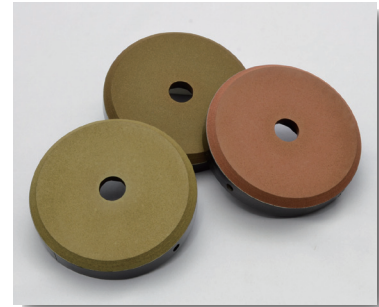
◆ For Edge Polishing Machine ◆



For people who has Edge Polishing Machine, we have 2 type good abrasives. One is for straight edge “TWINCUR-Resin EG2” and another is for bullnose “TWINCUR-Resin EB”.

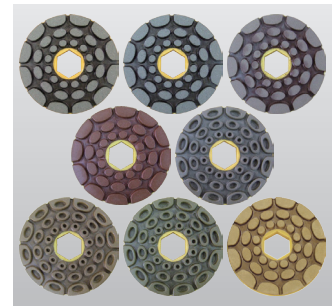
Our TWINCUR-Resin EG2, we already have a very good selling in the world. This is good for DEKTON too !

TWINCUR-Resin EB



* Can see the details on page 9.

TWINCUR-Resin EG2



* Can see the details on page 9.

FOR DEKTON



TWINCUR-Resin EG2

- Type : Resin Diamond
- Machine : Edge Polishing Machine
- Process : Wet
- Work material : Artificial stone, Marble, Granite, Tile
- Diameter : 100, 125, 150mm
- Grit : 50, 100, 200, 500, 1000, 2000, 3000, Tsuya
- Base : Snail Lock, H&L



TECHNICAL DATA on LCV 711M (Marmo Meccanica S.p.a)

Rotation speed : 1,400 min⁻¹
Feed speed : 1.3 m/min.

Material : GRANITE (kunnam black)

Condition		100R	200R	500R	1000R	2000R	3000R
Grit		100R	200R	500R	1000R	2000R	3000R
Pressure		2.4bar	2.4bar	2.4bar	2.8bar	2.8bar	2.8bar

Final Gloss : 83-88

Material : MARBLE (taiwan white)

Condition		100R	200R	500R	1000R	2000R	3000R
Grit		100R	200R	500R	1000R	2000R	3000R
Pressure		No need	2.4bar	2.4bar	2.8bar	2.8bar	2.8bar

Final Gloss : 100

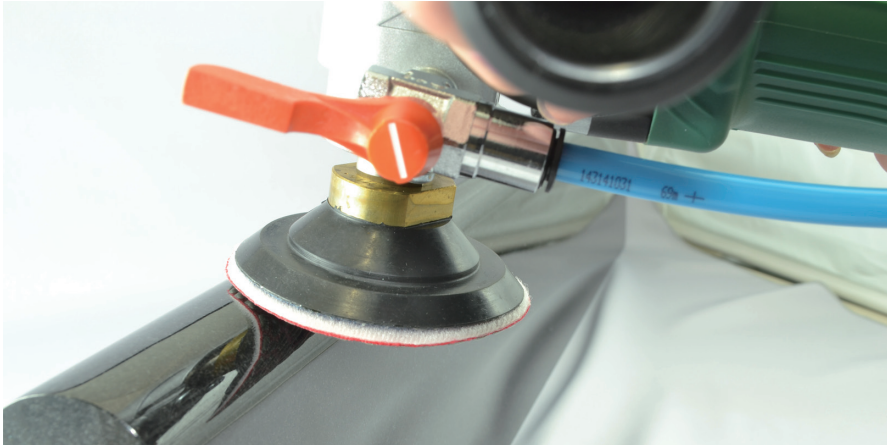
Material : ENGINEER STONE (black colour)

Condition		100R	200R	500R	1000R	2000R	3000R
Grit		100R	200R	500R	1000R	2000R	3000R
Pressure		2.4bar	2.4bar	2.4bar	2.8bar	2.8bar	2.8bar

Final Gloss : 77

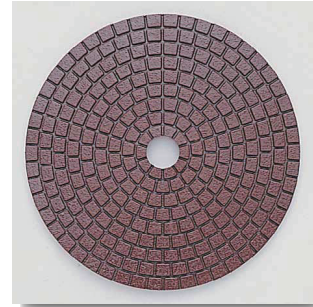


◆ For Hand Polishing ◆



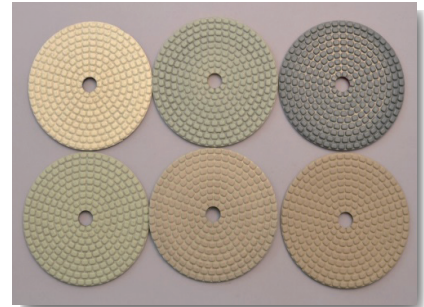
Our Flexible Pads are not only for Artificial Stone but also for natural stone.
Our Dia Ceramica-EX is very multi-purpose WET polishing pad. Making high quality to all stone.
Our Dia Ceramica DRY is mainly for DRY Granite polishing, but can polish the Artificial stone by WET polishing.
Very good at the hard material DEKTON by WET !

Dia Ceramica-EX



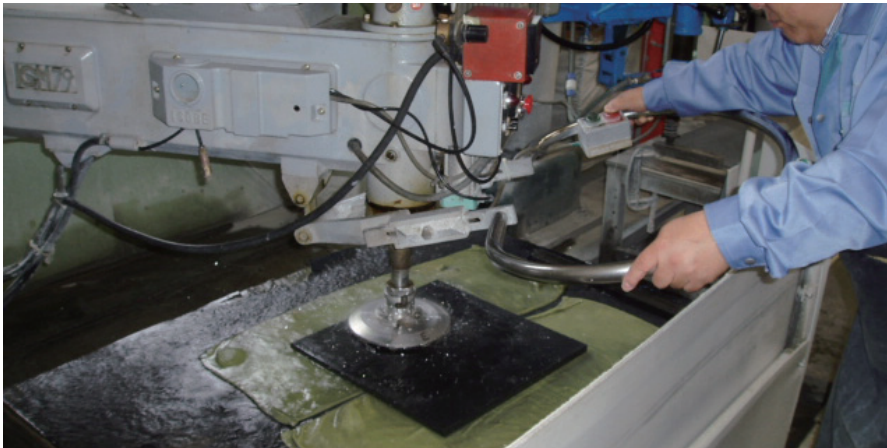
* Can see the details on page 11.

Dia Ceramica Dry



* Can see the details on page 12.

◆ For Radial Arm Polishing ◆



If you need to polish Artificial Stone by Radial Arm Machine, our SUMMIT-Resin AP is the best product to have a good result.
Our SUMMIT-Resin AP can be used on Granite and Marble too. In case Granite, please use our SUMMIT-Buff S after SUMMIT-Resin AP 3000R to have the best result.

SUMMIT-Resin AP



* Can see the details on page 4.

◆ For CNC Polishing ◆



In case you polish surface or making a drain board by CNC machine we have 2 type of good abrasives.

Both are not only for Artificial Stone but also for natural stone.

TWINCUR-Resin AP-A has 45 or 60 angle on the side of the abrasive, so can polish the chamfer of the drain board.

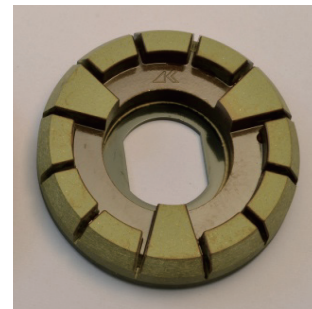
Both Magnetic and Snail lock attachment are available.

TWINCUR-Resin AP

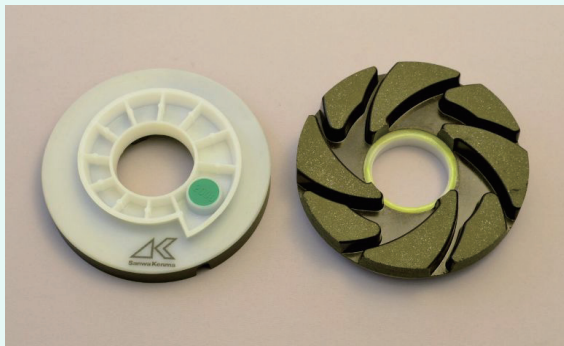


* Can see the details on page 8.

TWINCUR-Resin AP-A

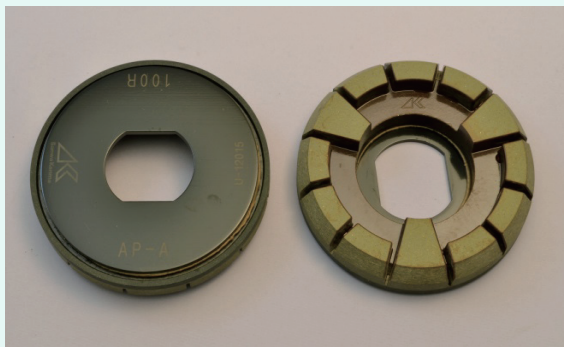


* Can see the details on page 8.



TWINCUR-Resin AP

- Type : Resin Diamond
- Machine : CNC
- Process : Wet
- Work material : Artificial stone, Marble, Granite, Tile
- Diameter : 100mm
- Grit : 100, 200, 500, 1000, 2000, 3000
- Base : Snail Lock, TOR



TWINCUR-Resin AP-A

- Type : Resin Diamond
- Machine : CNC Polishing Machine
- Process : Wet
- Work material : Artificial stone, Marble, Granite, Tile
- Diameter : 110mm
- Grit : 100, 200, 500, 1000, 2000, 3000
- Angle : 45°, 60°
- Base : Snail Lock, TOR